

Wind Energy in North Georgia



What is Wind Energy?

Wind energy is the ability to harness the wind's natural energy through a wind turbine to produce electricity. Just like traditional energy sources, the electricity produced by commercial scale wind energy can be sent through transmission and distribution lines to homes, businesses and schools across the region. A wind turbine can produce anywhere between 250 watts to several megawatts of power depending on the size and location of the turbine.¹

Why Choose Wind?

Wind is a clean, renewable and locally available energy resource. Wind energy has been proven to benefit communities through the creation of local jobs during construction and operations, as well as increase tax revenue annually throughout a project's life and land lease payments. In certain situations, wind may be the least cost energy resource available.

What Can Wind Power Be Used For?

Since wind turbines convert the wind's energy to electricity, wind power can be used for a variety of purposes including powering homes, schools and other buildings and pumping water.

How Much Does it Cost?

Wind energy is becoming increasingly competitive with other new sources of electricity, including coal and natural gas. Currently there are no incentives in Georgia for utility scale wind energy development. A state metering law exists to encourage buy back of small-scale wind power up to 10 kilowatts for residential and up to 100 kilowatts for commercial applications.

How Can I Get Started?

The Georgia Wind Working Group is working to advance wind activities throughout the state by providing general public education and technical outreach, targeted stakeholder outreach, hosting wind workshops, developing state specific literature, and providing presentations at key events.

The Georgia Wind Working Group promotes the responsible development and use of wind energy by facilitating stakeholder collaborations, assisting with resource assessments, and enhancing public understanding of the benefits and impacts of wind energy.

Please visit the website, www.gawwg.org, for more information including wind resource maps and other useful information.

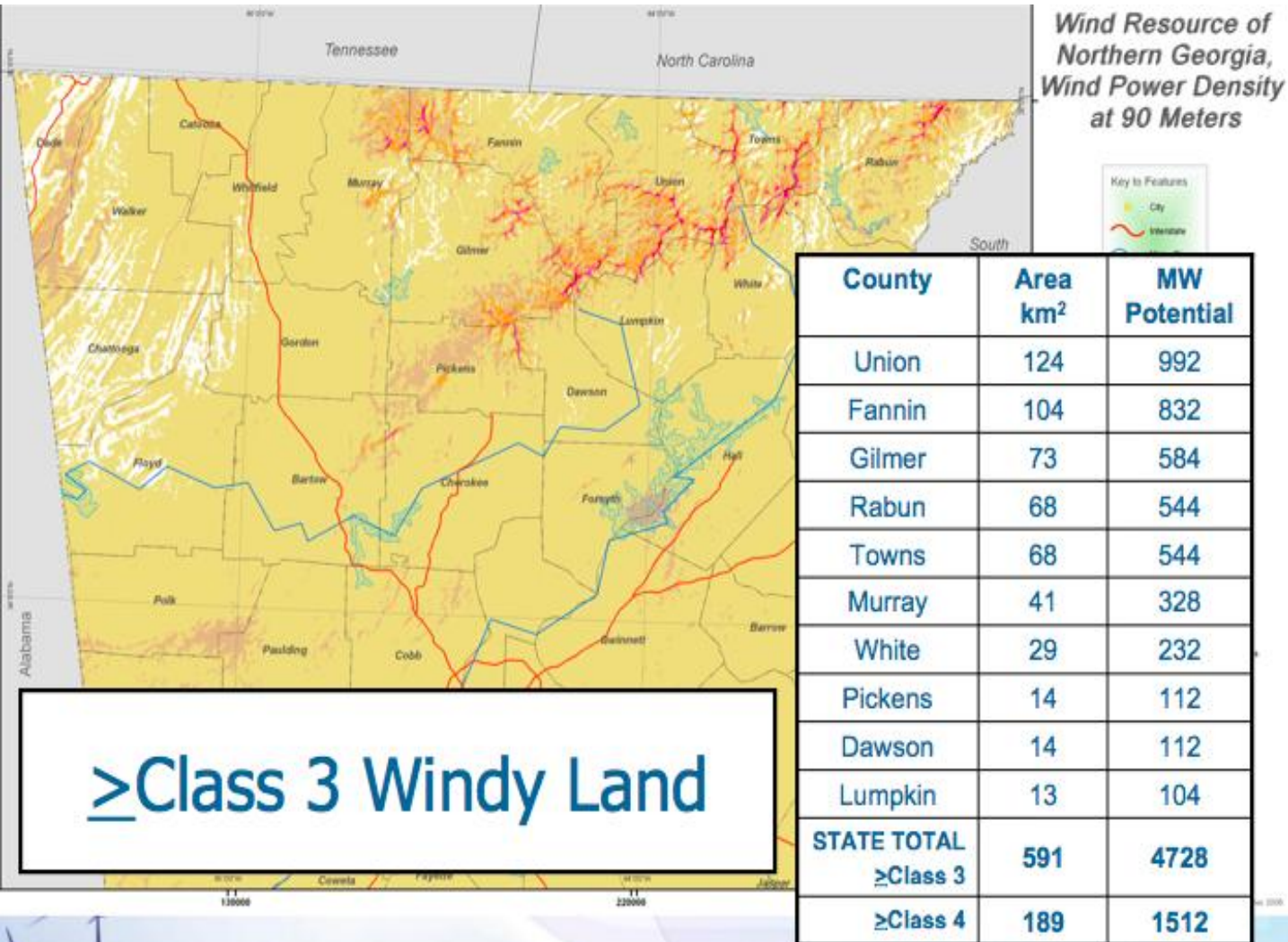
Developed by the Georgia Wind Working Group

¹http://www.awea.org/faq/wwt_basics.html#How%20much%20electricity%20can%20one%20wind%20turbine%20generate

What is North Georgia's Wind Potential?

Wind energy is the fastest growing energy source in the world, with thousands of new megawatts (MW) of wind energy being produced every year in Europe and the United States. Currently there are almost 158,000 MW of wind energy installed worldwide, with more than 35,000 MW in the United States. Some developers and landowners are exploring wind energy in Georgia and are finding options both off shore and in northern Georgia. According to the Georgia Wind Resource Map, the below counties have untapped wind resources (Class 3 and 4).

Based solely on the area available there are hundreds of megawatts of wind potential in this area. Factors such as wildlife, topography, viewsheds and other considerations will eliminate certain areas from development.



Note: Class 3 Wind Speeds are highlighted in orange, Class 4 Wind Speeds are highlighted in red Image Courtesy of Bruce Bailey, AWS Truewind



Visit us on the web
at www.gawwg.org

